

COMFORT RE-INVENTED





SMART AIR INTEGRATION

Comfort Your Way

Compact Comfort is defined by innovation meeting comfort in the modern Australian living space.

Our passion for achieving the utmost in human comfort drives us to offer an industry-leading range of compact, super high-static indoor units, cutting-edge technology outdoors, and a suite of stylish wall control interfaces.

We're proud to be the leading company worldwide to combine variable indoor airflow with variable refrigerant flow, allowing precise matching of outdoor capacity to indoor heat loads in multiple thermal zones.

- 1. Australian-owned, offering local support and a 5-year warranty, backed by over two decades of research and development tailored to Australian homes and conditions.*
- 2. Our exclusive line features a proprietary brand of controls and air conditioning units meticulously designed to seamlessly integrate, delivering unparalleled comfort.*
- 3. Experience precision control with the ability to lower indoor fan speed to 200l/s (1 Bedroom) and outdoor compressor to 10-12% (1 Room) – setting the industry standard.*
- 4. The most stylish controls on the market with Wi-Fi/phone control and the added convenience of remote support for backup comfort, ensuring a cutting-edge experience.*

WHY COMPACT COMFORT

Unleash Air Flow Freedom

Compact Comfort uses Variable Refrigerant Air Flow (VRAF) Inverter Technology. This combination means the indoor and outdoor unit matches the heating or cooling needs for each room or zone in the home.

Compact Comfort is the culmination of decades of designing and engineering intelligent energy solutions. Focusing on efficiency, stylish, non-invasive unit design, and flexibility, comprising of three indoor unit models in four capacities each model that can be mixed and matched with six outdoor unit capacities.

This system also connects to home automation systems such as Control4, Knx, RTI, Cbus and Dynalite to ensure full turnkey automation.

The Australian team behind the design and assembly of Compact Comfort are passionate about products that achieve the best results in human comfort.

Our world-leading range of compact indoor unit options, high-performance VRAF Inverter technology outdoor units and a suite of elegant wall control options showcase this dedication.

The Compact Comfort range is an exciting solution for the modern Australian living space.



Compact Comfort re-writes the rules using the latest fan technology, a unique unit design that's highly functional and fits in tight ceiling spaces.

The range of Super High Static and Comfort Cube uses "Refrigerant Stream Mapping" (RSM). This technology interrogates the system to ensure it prioritises capacity to where it is most needed.

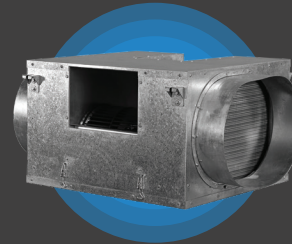
In cases where the preferred heating or cooling demand is less than usual, the VRAF outdoor unit can run as low as 10% of its capacity, and indoor units can go as low as 200l/s.

This feature, in conjunction with "RSM", means the system doesn't work as hard and can extend its life. It also reduces energy demand, saving money on running costs, making its energy-saving abilities a tough one to beat.

All of this, combined with one easy-to-use, fully integrated proprietary control system for access to the entire system, make Compact Comfort VRAF easy to use.

Compact Comfort controls are Wi-Fi ready and use our server "Compact Comfort Cloud", providing the end-user or system maintenance operator a high level of control from anywhere in the world with any mobile phone or PC device connected to the internet.

Rest easy - All units are backed up with a 5-year residential use warranty.

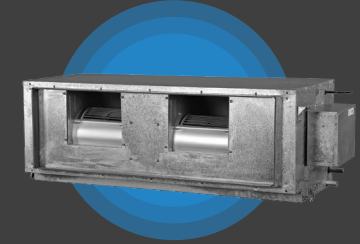


The **Cube Super High Static Indoor** is the hardest hitter in Australian air conditioning, breezing its way through the harsh extremes of Australia's climate utilising its fan power of up to 500Pa!

The ECM motor is at the heart of the "Compact Cube" unit (Electronically Commutated Motor). An ultra-highly efficient programmable, brushless and shaftless DC motor with a permanent magnet motor and built-in inverter. These factors make them very efficient, quiet, and easy to control.

The revolutionary and compact shape of the "Cube" turns homes and spaces with limited ceiling space, lengthy or complex duct runs, into dream installations for HVAC installers.

Plus, return air spigots and pre-mounted V-Slot truss relief-built in it's the standout choice.



The **VAV High Static Indoor** is perfect for modern homes with pitched roof designs or as an upgrade for outdated air conditioning.

Our VAV Indoor system offers versatility, compatible with both 1 to 1 setups and our VRF range, allowing for up to 200% indoor to outdoor capacity. It seamlessly integrates with all styles of our indoor units and proprietary controls.

With an airflow range up to 200Pa, it comfortably fits within the standard airflow range of reverse cycle systems.

Installation is a breeze with our two-piece construction design for 20 and 24kW indoor units. The separate fan deck and heat exchanger simplify handling in tight ceiling spaces and navigating roof trusses, making it an excellent choice for home renovation projects.



The **Bulkhead Mid Static Indoor (MSB)** range is designed for applications where space is at a premium, meeting the many challenges of today's approach to building construction.

Imagine a ceiling in a roof layout where even the smallest diameter duct won't fit. The low-profile design of the MSB 2.2 and 3.6kW models with a height of 210mm and depth of 500mm can come to the rescue to get you out of those tight spaces.

One of the added benefits of the MSB is that it works in complete harmony with our entire lineup of High and Super High Static ducted range and our own proprietary controls system options.

As a bonus, it is supplied with a built-in drain pump in the four models, making the installation faster and easier.



FLEXIBLE

Control Solutions

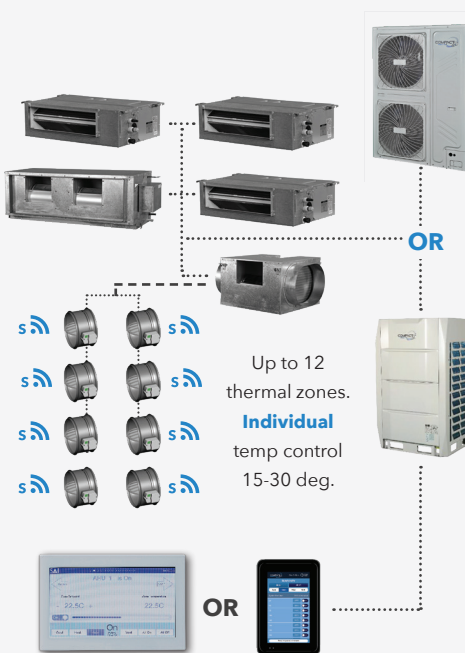
VRF12

The best choice for no ceiling space. Have up to 12 indoor units. This connectivity gives you the flexibility to air condition the largest of homes with individual room temperature control using our wall-mounted or Wi-Fi controller for an intuitive and easy user experience.



FM12 (Free Match)

The best choice for ceiling space on one level, no space on others. Have up to 12 thermal zones. Designed for large architectural designed homes. Utilises connectivity that allows 'zoning' and a series of bulkheads and airflow. Provides flexibility to control individual room temperatures from our proprietary controls.



VAV12

The best choice for comfort. A premium multi zone controller that offers up to 12 temperature controlled zones with the most comprehensive range of wall mounted wired controls that can be mixed and matched with the full range.



Number of connectable indoor units dependent on outdoor capacity & load diversity

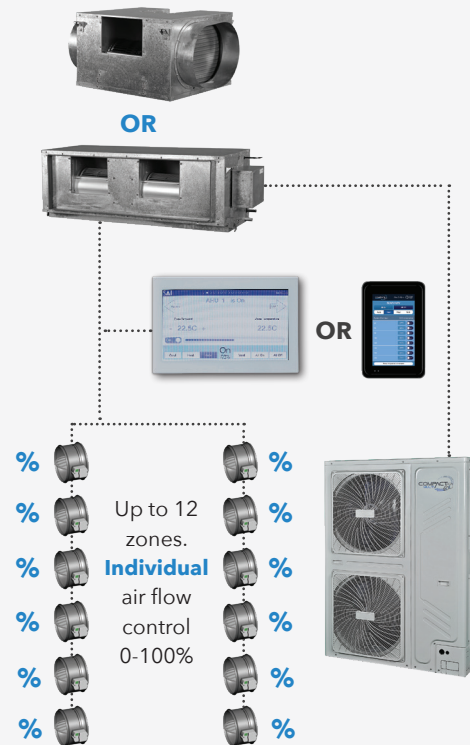
S Wave (Wireless)

The best choice for existing homes. Efficiently controls up to 12 zones utilising battery-powered on/off room sensors. The sensors use an RF network to deliver precise temperature readings within rooms. Ideal for wireless installations, particularly where cabling is impractical/unavailable.



Balance Point (Airflow Control)

The best choice for airflow. Have up to 12 zones. With each zone you have the ability to control 5% increments of airflow. The target temperature is set from the main controller. Added features of manually balancing each zone and is ideal for houses on a budget.







OPTIONS SIMPLIFIED

Selecting your system

WIRED

WIRELESS

Control Name	Surface 7 	Surface 5 	Navigator 	Captive Touch 	Dot Sensor 	S-Wave 	Android/ Apple 	<=12 Zones 	Temp Sensing Point	Number of Indoor Units
Balance Point	Yes	Yes	-	-	Yes (SF7 only)	-	Yes	Up to 12	Central	1
S-Wave	Yes	Yes	-	-	Yes (SF7 only)	Yes	Yes	Up to 12	Individual	1
VAV-12	Yes	Yes	Yes	Yes	Yes	Yes	Yes	Up to 12	Individual	1
VRF-12	Yes	Yes	Yes	Yes	Yes	-	Yes	-	Individual	Up to 12
FM12 (Free Match)	Yes	Yes	Yes	Yes	Yes	Yes	Yes	Yes	Individual	Up to 12

Number of connectable indoor units dependent on outdoor capacity and load diversity

FREE MATCH

Innovative Solutions

Heating and cooling system designers face various challenges due to the distinctive architecture of Australian homes. However, Compact Comfort stands out from other manufacturers in its understanding posed by these challenges.

To provide optimal solutions for different areas of a home, we offer "Free Match". Free Match utilises precise Variable Air Volume (VAV) control for areas where ductwork can be installed.

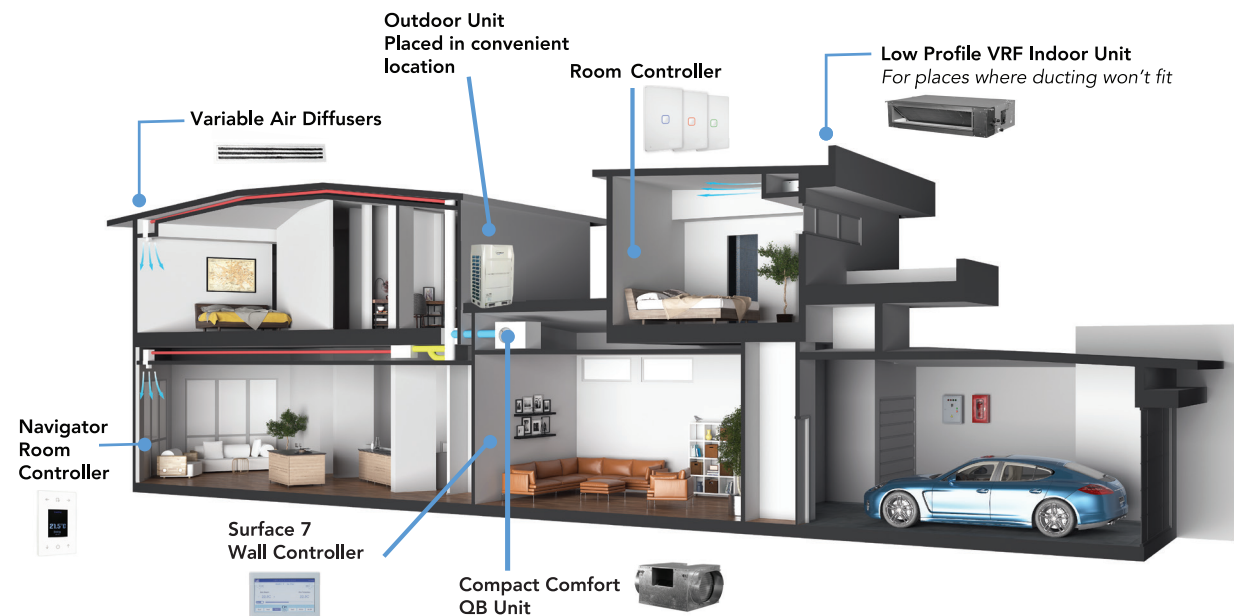
When ducting is difficult to fit, we offer a high-velocity indoor unit that dramatically reduces the size of the ductwork, and when ducting is impossible to fit, we provide our Variable Refrigerant Flow (VRF) option that requires pipework only.

Additionally, our proprietary "Freematch" technology allows for the mixing and matching of VRF and VAV zones, providing supreme flexibility for the homeowner and system designer.

This technology enables each room in a home to be built without compromise, with no additional building works impacting the structure.

This unique combination of up to 12 thermal zones (Bulkhead and Air Flow Zones) on one control system allows you to see and control the temperature of each room. This includes fan speeds of all the areas connected to this system via the main controllers or smart device (Mobile, tablet or computer) with an internet connection.

Compact Comfort with Free Match offers a seamless relationship and unprecedented ease of control, installation and design flexibility, not offered by anyone else.





TEMPERATURE ZONING

Take control

Compact Comfort separates itself from all the others with its power of zoning and system control. We have the ability to have up to 12 thermal zones of each rail connected to an indoor or system. This gives the home owner the ability to control reach room individually on airflow or temperature from a range of 15-30 degrees depending on the control system selected for your budget we have premium wired backlit controllers and wireless sensors down to a Dot Sensor for the minimalists that want control that the eye can barely see.

MAKE IT YOUR SCHEDULE

Compact Comfort allows you to set timers for your entire system twice a day as well as schedule individual zones.

For example, if you only require 1 room to be on at certain times for efficiency and flexibility you can choose a schedule that suits you. This is all done through our GUI (Graphical Designer Interface).

www.CompactComfortcloud.com

STYLE & FUNCTIONALITY

Selecting your controller

1



Surface 7

A super slim 18cm flush-mount touch screen wall controller. Provides access to system wide information in a sophisticated controller that blends into any décor.

2



Navigator Touchpad

Touch screen controller using a colour display for targeted feedback of system mode. Can be configured to control a single room or access the entire system for the rail its connected to including bulkhead zones for airflow adjustment.

3



RC (Room Controller)

Touch on/off controller. Simple zone control using an LED colour system. Blue = adding cool air, Red = adding warm air or Green = the desired temperature.

4



Dot Sensor

A small and flat circular white button used in conjunction with the Surface 7 or used instead of larger wall controllers in every zone sensing temperature only.

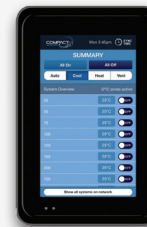
5



S-Wave RS*

This sensor allows on/off functionality from your room and it is battery operated therefore doesn't require a cable. Operates on the S-Wave RF network providing temperature and humidity.

6



SF5

A super slim 13cm flush-mounted wall controller. Network-enabled and user-friendly. Ensures easy control of all connected systems on your network to conveniently view and manage schedules on the screen and access them all from this one central point. Not used for temperature sensing.

LET'S GET Technical

Model			HS-LBH-2	HS-MBH-4	HS-MBH-9	HS-VAV-11	HS-VAV-16	HS-VAV-20	HS-VAV-24
Power supply	V-Ph-Hz	220-240/1/50							
Capacity kW	Cooling	2.2	3.6	9.0	10.5	15.5	20.0	25.0	
	Heating	2.6	4.0	10.0	11.5	16.8	22.5	26.0	
Airflow rate	Low L/s	108	120	265	200	200	250		
	Nom L/s	144	161	350	519	739	1200		
	Max L/s	201	225	535	645	1150	1400		
Static Pressure	Pa	10(0~50)		20(10~100)	100 (30~120)		100 (30~150)		
Indoor Unit	Net Dimensions (WxDxH)	mm	780 x 500 x 210		1230 x 775 x 270	965 x 690 x 423	1322 x 691 x 423	1454 x 931 x 515	
	Net weight	kg	18		37	48	63	130 (Splittable)	
Pipe Connection	Liquid pipe	mm (in)	Φ6.4 (1/4)		Φ9.5 (3/8)	Φ9.5 (3/8)		Φ12.7 (1/2)	
	Gas pipe	mm (in)	Φ12.7 (1/2)		Φ15.9 (5/8)	Φ15.9 (5/8)		Φ22.2 (7/8)	
	Drain pipe	mm	25mm (20mm Pressure Pipe Connection Ready)			25mm (20mm Pressure Pipe Connection Ready)		32mm (20mm Pressure Pipe Connection Ready)	
*Maximum distance from outdoor Unit	m	40			30	40	50	60	
Supply/Return Air Spigot (LxH)	mm	SA 512 x 145 RA 600 x 196		SA 933 x 179 RA 1035 x 260	SA 428 x 255 RA 722 x 339.5	SA 933 x 250 RA 1076 x 338	SA 936 x 378 RA 1122 x 342		



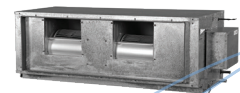
HS-LBH-2 HS-MBH-4



HS-MBH-9



HS-VAV-11



HS-VAV-20, 24

* Greater distances require engineering

LET'S GET Technical

Model			HS-QB-11	HS-QB-16	HS-QB-20	HS-QB-24
Power supply	V-Ph-Hz		220-240/1/50			
Capacity kW	Cooling		10.5	15.5	20.0	25.0
	Heating		11.5	16.8	22.5	26.0
Air flow rate	Min (L/s)		200		200	
	Nom (L/s)		519	739	1200	
	Max (L/s)		645	1050	1200	
Static pressure	Pa		100 (30~450)		100 (30~350)	
Indoor unit	Net Dimensions (WxDxH)	mm	565 x 665 x 495		765 x 718 x 490	
	Net weight	kg	52		65	
Pipe Connection	Liquid pipe	mm (in)	Φ9.5 (3/8)		Φ12.7 (1/2)	
	Gas pipe	mm (in)	Φ15.9 (5/8)		Φ22.2 (7/8)	
	Drain pipe	mm	20mm Pressure Pipe (Safety tray and 20mm P Trap included with Indoor)			
*Maximum Distance from Outdoor Unit	m		30	40	50	60
Supply/Return Air Spigot (LxH)	mm		263(W) x 345(H) 2 x Φ 400		330(W) x 345(H) 2 x Φ 450	



HS-QB- 11,16,20,24

* Greater distances require engineering



LET'S GET Technical

Description		HS-VRAF-H-11-1	HS-VRAF-H-16-1	HS-VRAF-H-20-3	HS-VRAF-H-24-3	HS-VRAF-V-28-3	HS-VRAF-V-34-3
Power Supply	V-Ph-Hz	220-240v~50Hz			380-415/3/50		
Cooling	Capacity (kW) Rated (Min~Max)	10.5 (2~11)	15.5 (2~16)	20 (2~22)	23.6 (2~26)	28.0 (4~30)	33.5 (5~35)
	Rated (Min~Max)	2.64	5.35	4.90	9.63	6.03	8.7
	EER	3.41	2.90	4.08	2.70	4.45	3.85
Heating	Capacity (kW) Rated (Min~Max)	11.5 (2~12)	16.8 (2~18)	22.5 (2.5~24.8)	28.5 (2.6~29.0)	31.5 (5~32)	37.5 (6~40)
	Power input (kW)	2.12	5.71	6.59	7.43	6.10	7.88
	COP	4.29	3.20	3.41	3.83	5.16	4.76
Outdoor Unit	Dimensions (W x D x H)	950 x 406 x 840	1040 x 452 x 865	1120 x 440 x 1558		990 x 790 x 1635	
	Net Weight (Kg)	72.5	95.4	143	144	227	227
Connectable Indoor Units	~Total Capacity % (without engineering)	50 - 130					
	Max Number	4	8	12			
Electrical	Signal Wiring	RS485 Std 2 x Twisted+Ground+Shield (3 Cables required+Shield 0.75mm)					
	Recommended Breaker Size (A)	32A 240v	40A 240v	25A 415v		32A 415v	
Refrigerant	Type	R410a					
Pipe Connections	Liquid pipe mm (in)	Φ9.5 (3/8)				Φ12.7 (1/2)	Φ15.9 (5/8)
	Gas Pipe mm (in)	Φ15.9 (5/8)		Φ19.1 (3/4)	Φ22.2 (7/8)	Φ25.4 (1)	Φ28.6 (1 1/8)
	*Total Pipe Length (M)	30		50	60		
Ambient Op Temp	Celsius	Cooling: -5~55, Heating: -15~27		Cooling -15~46, Heating -15~24		Cooling -5~48; Heating -20 ~24	



HS-VRAF-H-11-1
HS-VRAF-H-16-1



HS-VRAF-H-20-3
HS-VRAF-H-24-3



HS-VRAF-V-28-3
HS-VRAF-V-34-3

* Greater distances require engineering

~ Total capacity can range from 130% to 200% but must have engineering checks and approval before proceeding

COMPLETED JOBS

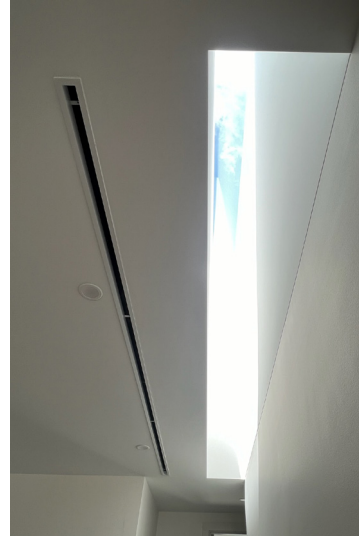
LINEAR SLOT



FLANGELESS BAR



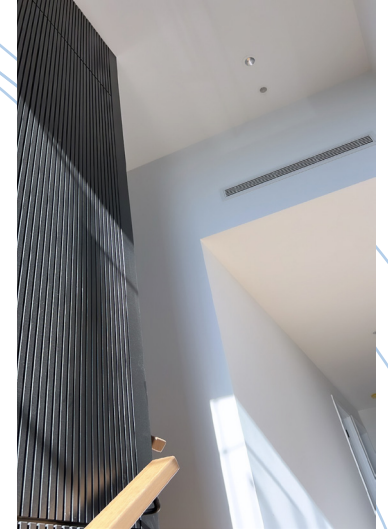
SINGLE SLOT



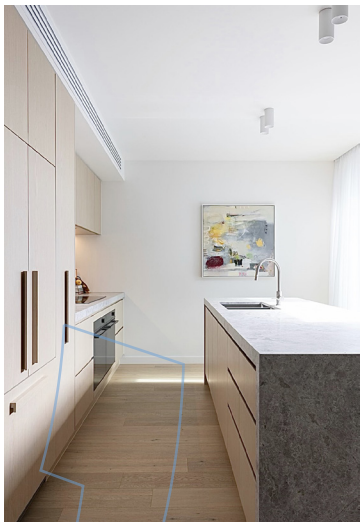
LINEAR SLOT



LINEAR BAR 0 DEGREE



LINEAR SLOT FRAME FRAME



LINEAR BAR



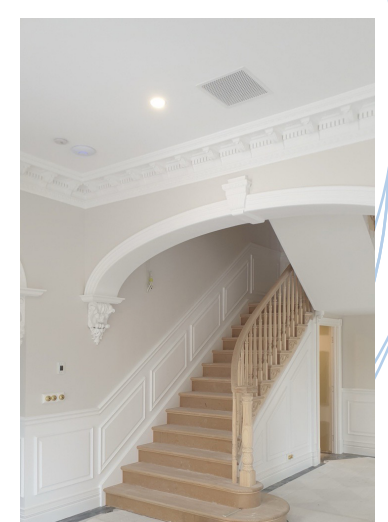
HYBRID SLOT



LINEAR SLOT



HERITAGE / VICTORIAN



COMPACT COMFORT AUS

Sales and Service

Ph: 1300 844 429

Email: service@saihvac.com.au

2/5 Hereford Street,

Berkeley Vale,

NSW 2261

VICTORIA

Vic Air Supplies Head Office

Ph: +613 9365 1900

Email:

techsales@vicair.com.au

40 Harrick Road

Keilor Park, VIC, 3042

For more information please visit www.compactcomfort.com

To register your system and remote access please visit www.compactcomfortcloud.com

The specifications in this document may change without notice and is not intended to replace information contained in Engineering or Installation Manuals. Cooling and Heating capacities noted in this brochure are nominal capacities at standard operating conditions. All images provided in this catalogue are used for illustration purposes only and may vary from the actual product.

Equipment conforms to MEPS GEMS

Vic Air Supplies is the Victorian distributor of Compact Comfort air conditioning systems and declines any responsibility for damage, direct or indirect arising from the use and interpretation of the contents of this brochure.

